

Note: Some designs in this collection may have been created using unique special stitches and/or techniques. To preserve design integrity when rescaling or rotating designs in your software, always rescale or rotate designs using the handles directly on-screen.



**12628-01 Freestanding Lace  
Cuff 1**  
3.67 X 5.98 in.  
93.2182 X 151.89 mm  
44,408 St.



**12628-02 Freestanding Lace  
Cuff 2**  
3.10 X 5.97 in.  
78.74 X 151.64 mm  
41,241 St.



**12628-03 Freestanding Lace  
Cuff 3**  
2.88 X 6.22 in.  
73.15 X 157.99 mm  
45,046 St.



**12628-04 Freestanding Lace  
Bracelet 1**  
1.90 X 6.01 in.  
48.26 X 152.65 mm  
29,166 St.



**12628-05 Freestanding Lace  
Bracelet 2**  
1.50 X 6.00 in.  
38.10 X 152.40 mm  
25,368 St.



**12628-06 Freestanding Lace  
Bracelet 3**  
1.43 X 6.00 in.  
36.32 X 152.40 mm  
22,579 St.





# Freestanding Lace Bracelets and Cuffs




#12628 / 6 Designs

Listings below indicate color sample, stitching order and suggested thread color number. Most numbers indicate Isacord thread. Colors beginning with 20501 refer to YLI Fine Metallics, 7 refer to Yenmet Metallic, 8 refer to YLI Variations Variegated Thread and 9 refer to Isacord Multicolor Variegated.




### 12628-01 Freestanding Lace Cuff 1

 1.Lace Fills .....	4752
 2.Satin Outlines .....	4752




### 12628-03 Freestanding Lace Cuff 3

 1.Loose Lace Fills .....	2051
 2.Dense Lace Fills .....	2051
 3.Satin Outlines .....	2051




### 12628-05 Freestanding Lace Bracelet 2

 1.Dense Lace Fills .....	1521
 2.Loose Lace Fills .....	1351
 3.Satin Outlines .....	1430




### 12628-02 Freestanding Lace Cuff 2

 1.Loose Lace Fills .....	0670
 2.Dense Lace Fills .....	0670
 3.Satin Outlines .....	0670

### 12628-04 Freestanding Lace Bracelet 1

 1.Dense Lace Fills .....	2864
 2.Loose Lace Fills .....	0142
 3.Satin Outlines .....	2674

### 12628-06 Freestanding Lace Bracelet 3

 1.Dense Lace Fills .....	1032
 2.Loose Lace Fills .....	1060
 3.Satin Outlines .....	1061

### Freestanding Lace Instructions

#### General Freestanding Lace Guidelines

##### Supplies:

##### Embroidery Thread:

- Use the same embroidery thread in the bobbin as the needle.

##### Needles:

- Use an Organ 80/12 Titanium needle for extended needle life.

##### Stabilizer:

- Use water-soluble stabilizer or film water-soluble stabilizer.

##### Handy Hints:

##### For Stiffer Lace:

- DO NOT rinse away all of the stabilizer for a “stiffer” lace. Note that the thread may appear a shade darker if stabilizer is not removed completely.
- If you happen to wash too much out, easily re-stiffen by diluting some stabilizer scraps in water and dipping the item in the solution.

##### For Very Soft Lace:

- Cut away excess stabilizer. Remove remaining stabilizer by rinsing under warm running water until all traces of the stabilizer are gone. **Note:** If lace should become too limp to work with, dissolve stabilizer scraps in warm water and apply to the lace.

##### Drying Lace:

- The lace looks best when left to dry completely. Lay lace piece with right side down to dry. This will minimize the tendency for the lace to curl. Be sure to flatten the piece out entirely and allow ample time to dry.

##### General Instructions

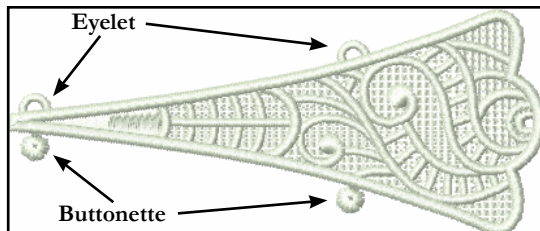
1. Hoop two layers of water-soluble stabilizer.
2. Attach the hoop to the machine and select the design of your choice.
3. Stitch the design.
4. Remove the hoop from the machine and the design from the hoop. Trim excess stabilizer from the design.
5. Rinse away remaining stabilizer and allow it to dry.

##### Handy Hints:

##### For 3D Lace Projects:

- Rinsing out lace with very hot water can cause wrinkles in some fabrics after it has been embroidered. To prevent this, pre-shrink cotton fabric by washing it in warm water and drying it in a dryer.
- If item becomes too limp to work with, iron the appliqué pieces on the wrong side while applying spray starch. After ironing, spray again with starch and allow to dry completely. This will stiffen the lace pieces nicely and aid in construction.
- A pair of tweezers, hemostats, stiletto or a tiny crochet hook can be extremely helpful when inserting the buttonettes into the eyelets. (Please see **Diagram 1** for explanation of “buttonette” and “eyelet”.)
- Insert the tip of the tweezers, hemostats or crochet hook into the eyelet, grasp the buttonette and pull through the eyelet. Or a stiletto could be used to push the buttonette through the eyelet.

**Diagram 1**



### Supplies

- OESD Aqua Mesh Wash Away stabilizer
- Isacord thread
- 4 jump rings
- Toggle Clasp or other Jewelry Clasp
- Jewelry Pliers

### Instructions

1. Hoop two layers of OESD Aqua Mesh Wash Away stabilizer. **Photo 1**
2. Thread the needle and the bobbin with matching Isacord thread.
3. Place the hoop on the machine and stitch, following the thread chart for colors or choosing your own. **Photos 2**
4. When finished stitching, remove the project from the hoop. Cut away most of the excess Aqua Mesh. **Photo 3**
5. Rinse the bracelet under warm running water. **Photo 4**
6. Allow the project to dry or place between two layers of terry cloth and press dry. **Photo 5**
7. Attach one jump ring to the loop at the end of one bracelet and close. **Photo 6**
8. Attach a second jump ring to the first, adding one piece of your desired closure. **Photo 7**
9. Repeat on the other side of the bracelet.
10. Your bracelet is ready to wear. **Photo 8** and **9**



Photo 1



Photo 2



Photo 3

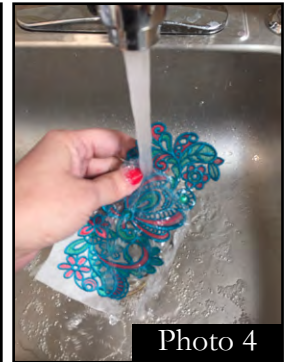


Photo 4



Photo 5

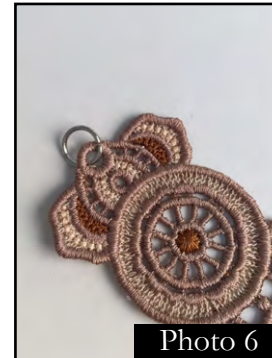


Photo 6

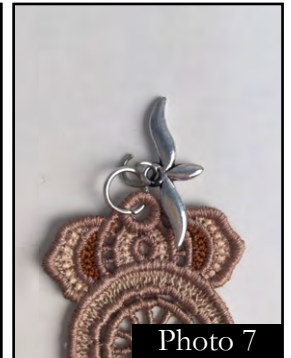


Photo 7



Photo 8

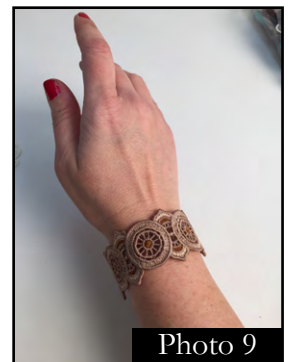


Photo 9